

FREE QUOTE REQUEST

1742 N. Case Street • Orange, California 92865 • Phone 714-532-9005 • Fax 714-532-9007 • Email: info@cabinetsquick.com • Web: www.cabinetsquick.com



PROJECT NAME OR NUMBER _____

CONTACT NAME _____

CELL _____

COMPANY NAME _____

PHONE _____

FAX _____

STREET ADDRESS _____

EMAIL _____

CITY, STATE, ZIP CODE _____

How did you learn about us? _____

1 PARTS & SHIPPING

- Assembled Cabinets Flat Stacked Parts

2 CABINET (CASE) MATERIALS

- PARTICLEBOARD**
 Melamine: Color _____
 Laminate: Color _____
- PLYWOOD**
 Laminate: Color _____
 Veneer _____
 Stain Grade Paint Grade Pre-finished
- MDF**
 Laminate: Color _____
 Veneer Type _____
 Raw
-
- FINISHED ENDS**
 Color _____
- EXPOSED INTERIORS**
 Color _____
- WALL BOTTOM MATERIAL**
 Match Interior Match Exterior

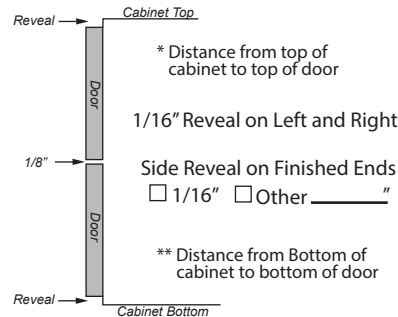
3 EDGEBANDING MATERIALS

- CABINET**
 Color _____
 Material: PVC Veneer P-LAM
 Thickness: 1/2 mm 1 mm
 Face Frame - No Banding on Cabinet
- ADJUSTABLE SHELF**
 Color _____
 Material: PVC Veneer P-LAM
 Thickness: 1/2 mm 1 mm
- DOORS & DRAWERS**
 Color _____
 Material: PVC Veneer P-LAM
 Thickness: 1/2 mm 1 mm

4 CONSTRUCTION

By selecting this option Cabinets Quick will follow our typical standards and order delivery methods, only materials and hardware need to be specified.

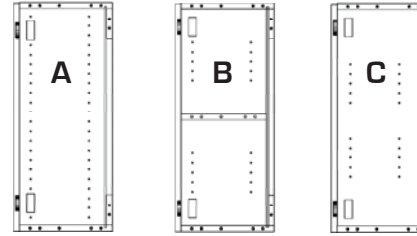
- Conformat with Dowels on Finished Ends
 All Dowel Construction
-
- DOOR REVEALS**
 Base Cabinets:
 * Top: 1/4" 3/8" Other _____"
 ** Bottom: 0" Other _____"
- Wall Hung Upper & Tall Cabinets:
 * Top: 1/8" Other _____"
 ** Bottom: 0" Other _____"



- LIGHT VALANCE**
 Light Valance
 Height: 2" 1 1/2" Other _____"
-
- Ripped Material 96"
 Valance Height: 2" Other _____" Qty _____

5 CABINET CONSTRUCTION

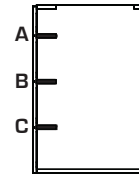
- CABINET LINE (BORE) DRILL**
 (A) Full 32mm Line Bore
 (B) 32 mm Line Bore Per Opening
 (C) Bore Only Required Holes



- BASECABINETTOPS**
 (A) Top Stretchers (B) Full Top



- DRAWERSTRETCHERS**
 No Drawer Stretchers
 (A) Drawer Stretcher at Top Drawer Only
 (A, B, C) Drawer Stretchers at All Drawers



- TOE KICK PARTS**
 I will do my own
 Provide Leg Levelers
 Provide Ripped Door Material 96"
 Toe Height 4" Other _____" Qty _____
 Provide Integrated Toe
 Toe Height 4" Other _____"
 Notch Depth _____"

6 DOORS & DRAWERS

- SLAB DOORS & DRAWER FRONTS**
 Provide Doors & Drawer Fronts Yes No
 Color _____
 Core: Melamine Plywood MDF P.B.
 Grain Matching: Yes No

- DRAWER GUIDES**
 Provide Drawer Guides with Order Yes No
 Side Mount Undermount

- DRAWER BOX PARTS**
 Provide Drawer Boxes with Order Yes No
 5/8 Dowel Drawer Box
 Melamine: Color _____
 Prefinished Maple Ply

- 1/2 Dovetail Drawers
 Baltic Birch Solid Wood Maple
 Legrabox

- HINGES**
 Provide Hinges with Order Yes No
 120° Blum Standard Hinges (Inserta)
 110° Blum Soft Close Hinges (Inserta)

7 FINISHED SIDES (ENDS)

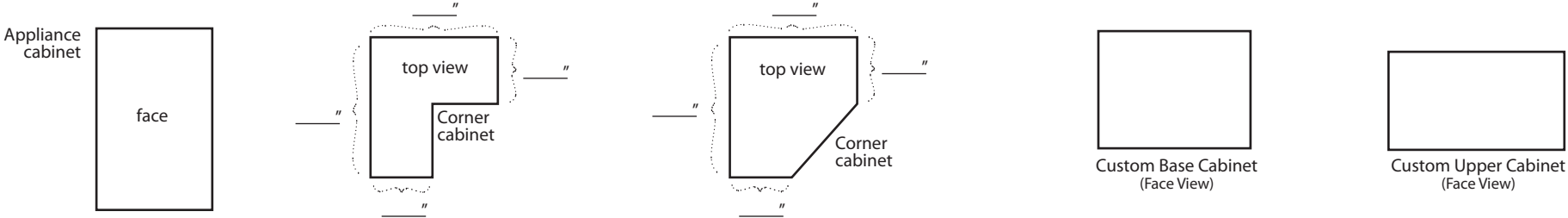
- Doweled Finished Ends
 Applied Finished Ends
 Base Finished End Scribe _____"
 Upper Finished End Scribe _____"

8 FILLERS

- Ripped Material 96"
 Filler Width _____" Qty _____
 I will do my own filler

																Company Name	Project Name or Number	Room Name or Number
Item #	Cabinets Quick Template #	Quantity	Width	Height	Depth (excluding door)	Hinging: L, R, (P)air, (O)pen	Finished Ends: L, R, (B)oth	# of Vertical Partitions	Vertical Partitions: Specify interior clear opening from Left	# of Fixed Shelves	Fixed Shelves: Specify interior clear opening from Left	# of Adjustable Shelves	# of Drawer Fronts	Drawer Front Height: Specify from Top to Bottom	Additional Instructions: inset apron, false front, panels, fillers, need for edgebanding, etc.			

Use this area to give us additional information and details as needed. NOTE: Provide INSIDE CLEAR dimensions or send sketch/CAD drawings for custom cabinets.



Cabinet Reference

Bases		Sink Bases		Base Corners		Upper Corners	
	100		201		401R		M602 Microwave
	101		201ADA		401L		701R
	102		202		411R		701L
			202ADA		411L		
Uppers				Drawer Bases		Talls	
	600		301		501T Trash		800
	601		301ADA		522T Trash		802 Refer
	602		302		520		801
			302ADA		540		812N
					530		822DN
					550		802E
					511		802UE
					521H		831D
					512		832D
					522H		

Not all models are shown.
Please see Catalog for details.